

# CLIMAFLEX® SCREENING SOLUTIONS



SCREENING  
SOLUTIONS

	
ISO 9001 : 2015	Certificate 33368
ISO 14001 : 2015	Certificate 49158
OHSAS 18001 : 2007	Certificate 49159

**OCEAN RUBBER FACTORY** is the Middle East's Leading innovator for technical rubber products. With 500 Employees across four countries and eight factories ORF serves customers with custom solutions to their unique requirements.

OCEAN RUBBER FACTORY LLC N.26-30, Al Ghail Industrial Park, Ras Al Khaimah P.O. Box 6637.  
General enquiries: +971 6 5344 110 | [www.ORF.ae](http://www.ORF.ae) | [info@ORF.ae](mailto:info@ORF.ae)

**OCEAN RUBBER FACTORY LLC**

# CLIMAFLEX® WIRE SCREENS

TYPE OEF/PNR-A  
SINGLE CRIMP  
DIN 4192-FORM AT



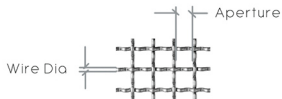
Common  
Crimping  
Patterns



TYPE OEF/PNR-D  
DOUBLE INTERMEDIATE CRIMP  
DIN 4192-FORM C



Common Hook Types



Wire Dia

Aperture

Refer back page for  
Wire Screen Selection Table

Wire dia from  
2mm to 12mm

Apertures from  
2mm to 120mm

Abrasion resistant  
High tensile wires

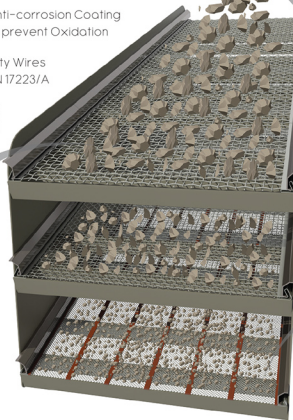
More open area  
/ High efficiency

Precise & Consistent  
Apertures regularly

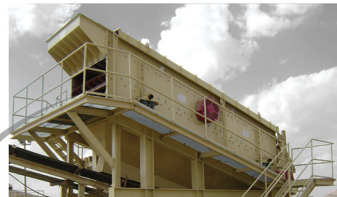
Anti-corrosion Coating  
to prevent Oxidation

High Quality Wires  
As per DIN 17223/A

Durable Weaving  
As per ISO 4783/3

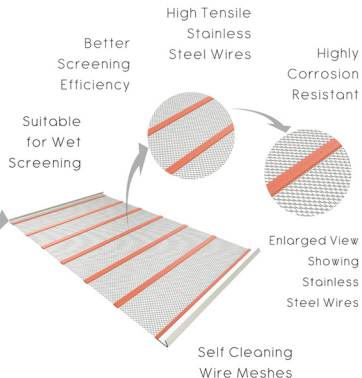


Typical Climaflex Wire Mesh Installation Detail

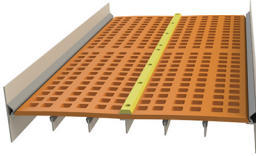


Climaflex Single Inclination Screen Deck  
(A Product by Ocean Rubber Factory)

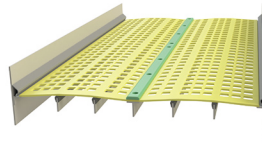
## CLIMAFLEX® ANTI-CLOGGING WIRE SCREENS



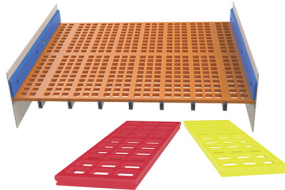
# CLIMAFLEX® SCREEN PANELS



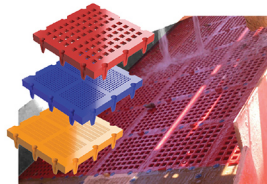
Armored PU Bolt Down Panels  
Pre-tensioned panels are bolted down to the deck.  
Suitable for heavy impact conditions.  
Wide range of apertures – 5mm to 100mm.  
Max. overall size – 2m x 4m.



Rubber / PU Tension Mat with Hooks  
Fits all screens with cambered decks & tensioning rails.  
High flexibility, no plugging & high efficiency.  
Wide range of apertures – 1mm to 50mm  
Max. overall size – 2m x 4m.



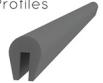
PU Modular Panels  
Provides flexibility in wear material selection.  
Easy maintenance & assembly  
Excellent for wet screening  
Wide range of apertures – 1mm to 50mm  
Wide range of size, design & accessories.



Sand Washing Modular Panels  
Specially designed for wet screening.  
Excellent for easy assembling & maintenance.  
Micron level precise apertures through injection moulding.  
Wide Range of apertures – 0.3mm to 40mm.  
Max. overall size – 500 x 500mm.

## Fixing Accessories

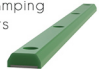
### Rubber U-Profiles



### Modular Panel Locks



### Clamping Bars



### Clamping Side Bars



## STEEL WIRE SCREEN SELECTION TABLE (Custom sizes are available on request)

Aperture (mm)	Medium Series			Medium-Heavy Series			Heavy Series		
	Wire Dia (mm)	Weight (kg/m)	Open Area (%)	Wire Dia (mm)	Weight (kg/m)	Open Area (%)	Wire Dia (mm)	Weight (kg/m)	Open Area (%)
2				1.5	8.1	32.65			
3				1.5	6.31	44.44	20	10.1	36
4				2	8.42	44.44	2.5	13.9	39
5	2	7.23	51.02	2.5	10.55	44.44			
6	2	6.33	56.25	2.5	9.31	49.83	3	12.67	44.44
10	3	8.81	59.17	4	14.56	51.02			
12	3	7.65	64	4	12.76	56.25	5	18.78	49.83
20	5	12.87	64	5	17.84	59.17			
22	5	11.94	66.39	6	16.6	61.73	7	21.84	57.55
25	6	15.04	65.04	7	19.85	61.04			
30	6	13.01	69.44	7	17.25	65.74	8	21.96	62.33
35	7	15.27	69.44	8	19.5	66.25			
38	7	14.29	71.31	8	18.28	68.24			
40	7	13.71	72.43	8	17.55	69.44			
45	8	15.97	72.09				10		
50	8	14.66	74.32	10	22.9		12	32.96	
55	8	13.56	76.22	8	13.56		10	19.19	
60	8	12.6		10	19.69		12	28.33	
65	8	11.36		10	17.31		12		
70				8	10.18		10	15.55	
75	8	9.56		10	14.63		12	20.63	
80	8			10	13.8		12	19.49	
85				10	13.6		12	18.47	
90				10	12.4		12	17.55	
100	10	11.27		12	15.96				
120				12	13.52				

Climaflex Steel Wire Meshes are manufactured using German Technology & Standards proven to be the best in the world. Wire screens are made by crimping & weaving specially treated High Tensile Steel Wires conforming to DIN 17223/A in fully automatic German Machinery by technicians well trained under German supervision. Climaflex Wire Screens are Wear, Fatigue Resistant and designed to withstand most demanding work environments.

- Any other type of wire screen with apertures wire diameters & profiles not listed in the table could be made specifically to order.
- If there is any need of a specific Weaving type other than mentioned in this leaflet must be specified in the enquiry.
- Weight & open area for reference purpose only

### OCEAN RUBBER FACTORY LLC - UNITED ARAB EMIRATES

Tel. +971 7 202 3888 / Fax: +971 7 258 4556 P.O. Box 6637, N.26-30, Al Ghail Industrial Park, Ras Al Khaimah